

# Board of Education

Update on Facilities Master Plan and  
Prioritization Criteria

**12/9/15**

**Our Children, Our Schools, Our Future**



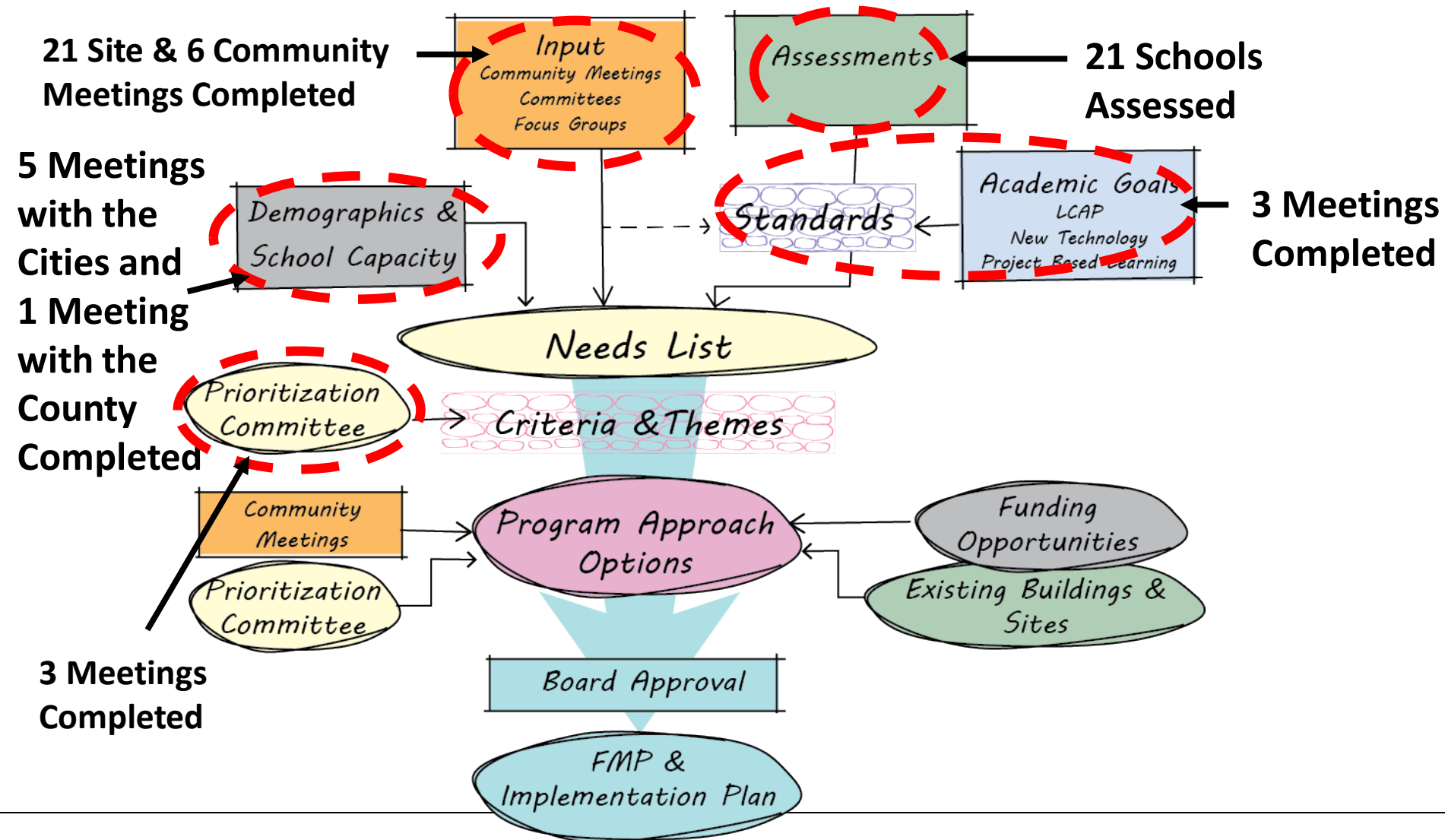
West Contra Costa Unified School District  
Long-Range Facilities Master Plan

# Purpose of the Meeting

- Review Progress to Date
- Input from Site and Community Meetings
- Approve Prioritization Criteria
- Next Steps
  - Program Approach



# Process/Progress Chart





# Site and Community Feedback

**Our Children, Our Schools, Our Future**



# Site Meetings

Site Meetings – Either the Site Councils or the Site Design Review Committees including staff, parents, students and community members

## The Questions we have asked:

1. What is your general perception of the facilities throughout the District?

### Most Common Responses

- Unequal
- Some Great Schools / Some Old Schools
- Schools should reflect the importance of learning
- Some school received extras while other schools have had nothing

2. What are your top concerns with your current facility?

3. What facilities improvements would have the most impact at your site?

4. Is there a facility improvement that would further help your child learn?



5. What criteria do you believe should be used to determine the prioritizing/sequencing of the future school construction?

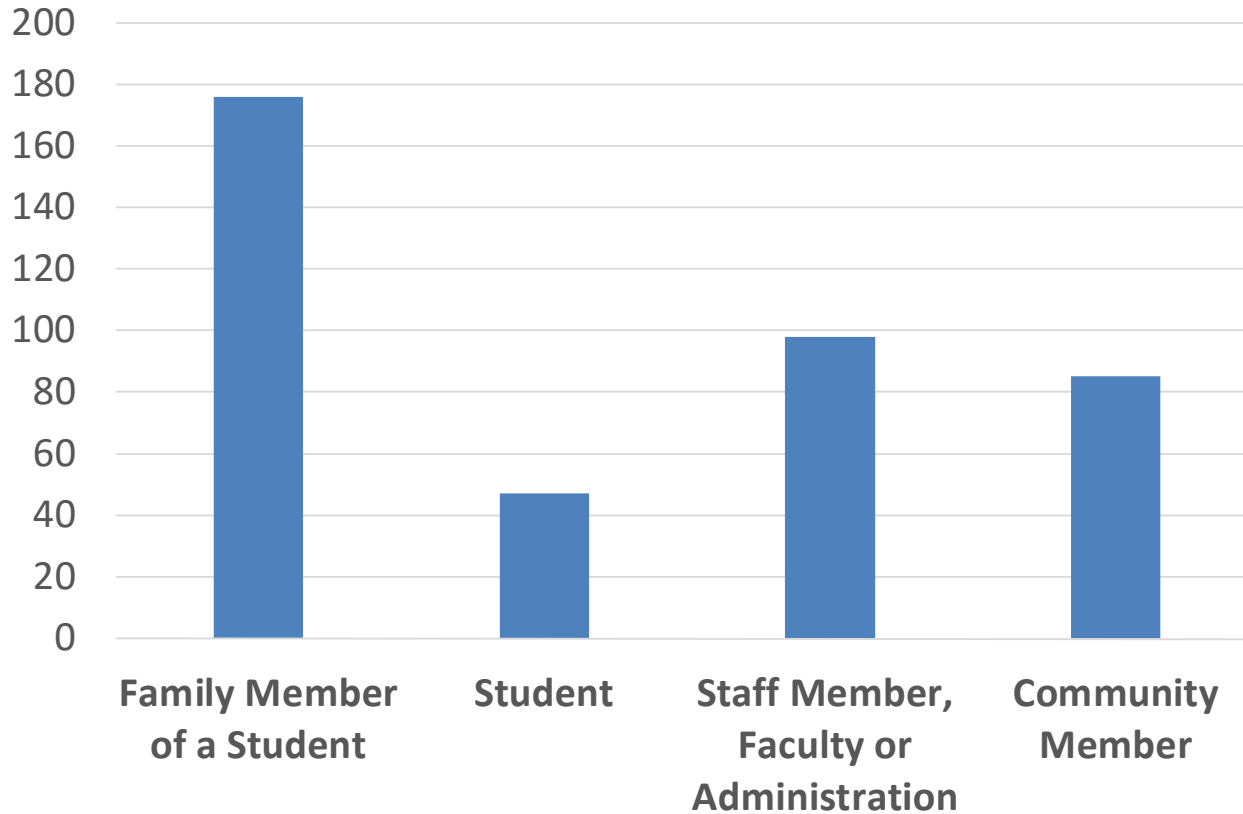
### Most Common Responses

- Age
- Physical condition
- Functionality
- Have master plans and/or drawings complete
- Number of portables
- Safety and security issues
- Missing critical spaces
- Years since last improvements
- Economically disadvantaged area
- Access for the physically disabled
- Academic performance
- Community connectivity
- Schools with out enough classrooms
- Not enough parking and circulation
- School appearance



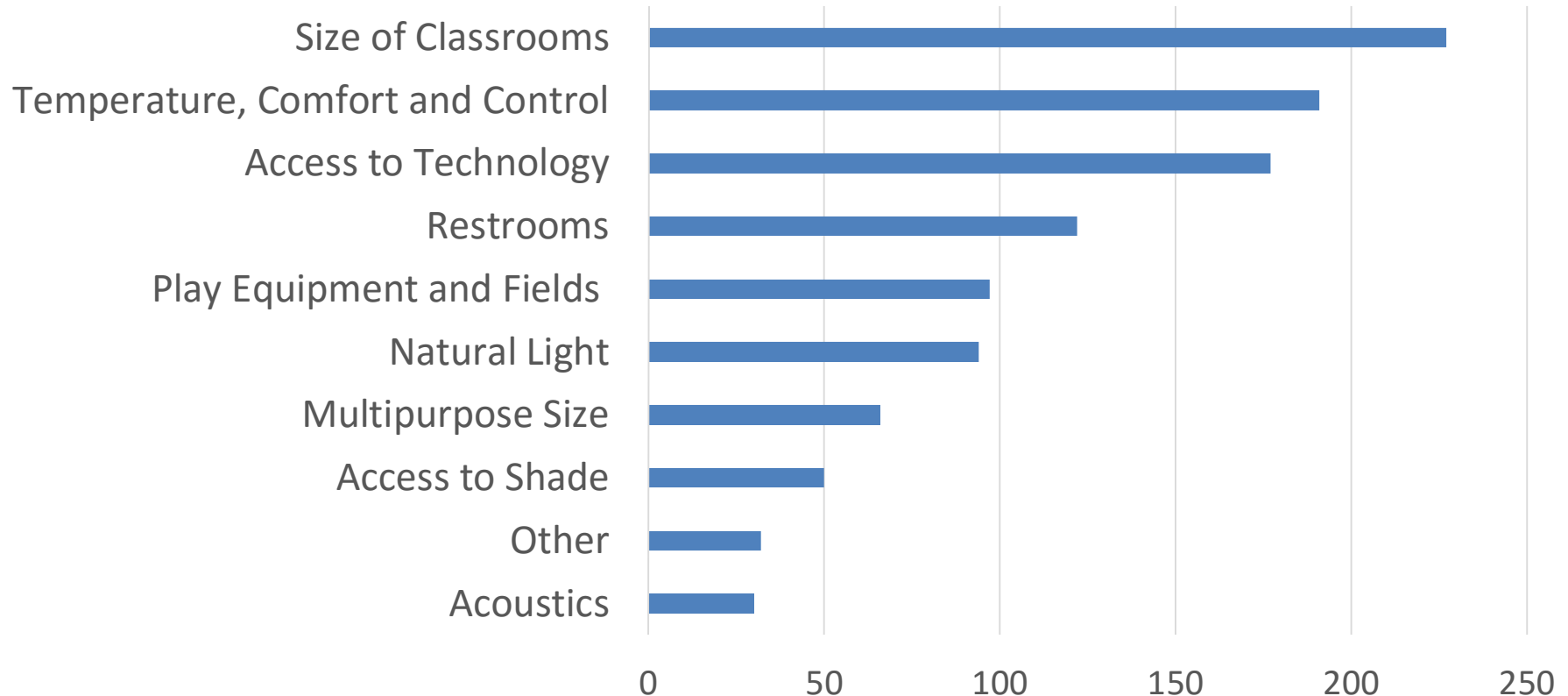
# Community Meetings

Please describe your relationship to West Contra Costa.  
Check all that apply.



# Largest Effect

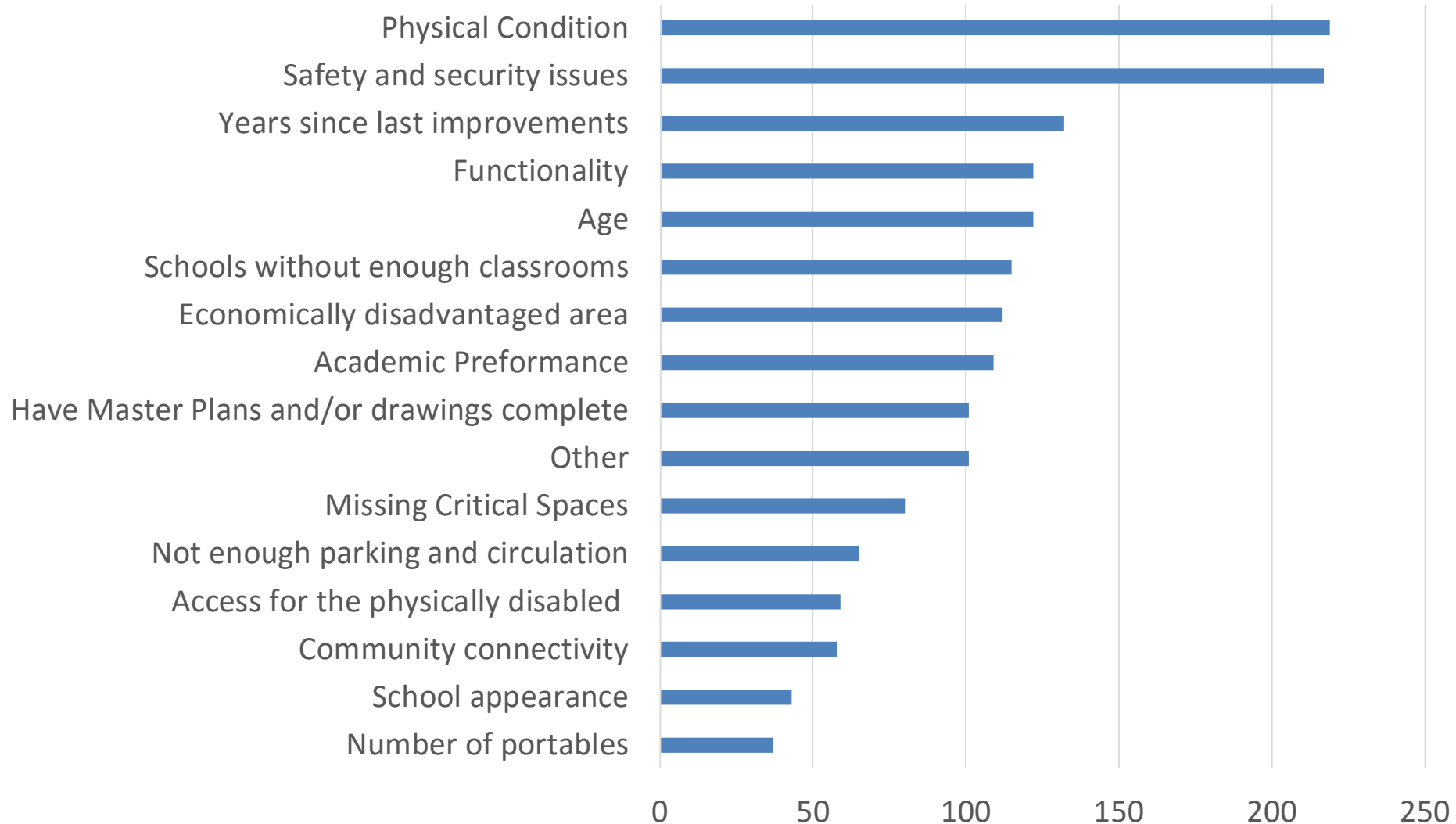
Which of the following have the largest effect on healthy climate and student learning in our schools. Select three of the most important from this list.





# Criteria for Prioritizing

The following list represents suggested criteria for prioritizing projects. Please select *five* that you feel are the most important.



# Common Additional Criteria



- % of Enrollment ESL, Foster or Low Income
- Eligible for Future State Funding
- Lack of Air Conditioning
- Lack of Technology Infrastructure
- Ratio of Toilets to Students
- Schools that have been Previously Promised New Facilities



# Common Themes

- Charters are Impacting WCCUSD's Enrollment
- Confidence and Community Trust
- Not Enough Money To Do all Projects
- Wide Range of School Size and Capacities
- Perceived Lack Academic Excellence
- Cities' Influence on Schools
- Wide Range of Facilities Conditions
- District Support Facilities Need Permanent Homes



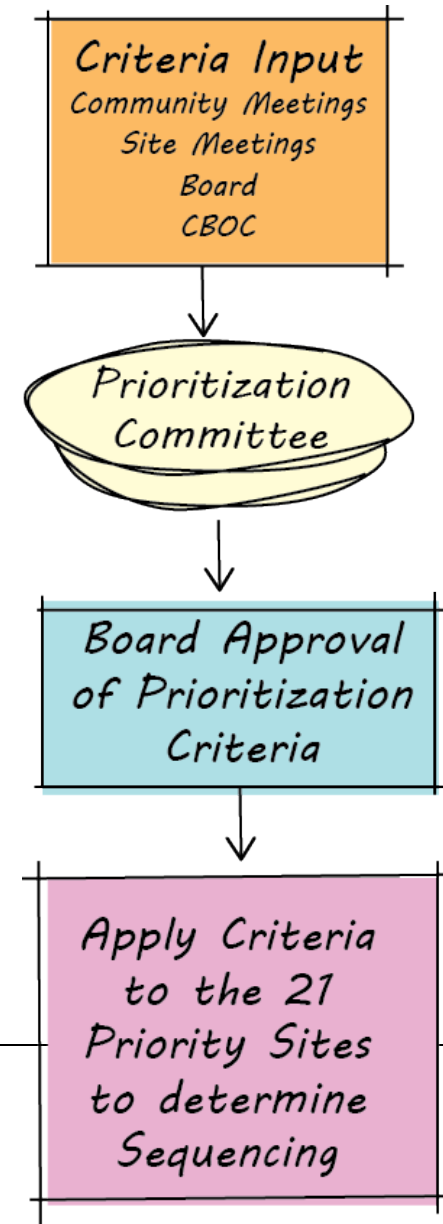
A blurred photograph of a group of people in a meeting room. In the background, a large whiteboard is visible, displaying various charts and data. The scene is brightly lit with overhead fluorescent lights. The overall atmosphere is professional and collaborative.

## **Prioritization Criteria**

**Our Children, Our Schools, Our Future**

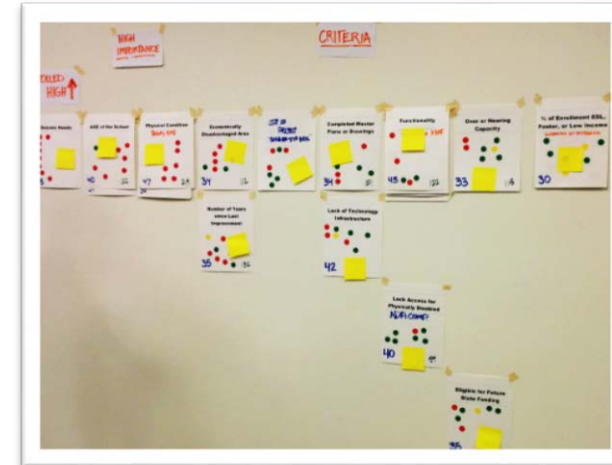
# Creating the Priorities

- A Prioritization Committee was formed to consider and recommend criteria for project sequencing to the Board of Education
- Members included:
  - Elementary Parents from each of the 6 High School Families
  - Representatives from each city and one from the county
  - Three member chosen by K-12 Operations



# Creating the Priorities

- Input from Site and Community meetings was presented to the Prioritization Committee
- Committee considered 25 criteria generated from the site and community meetings
- The committee added and split several criteria before combining and narrowing the criteria
- The final criteria recommendation included 12 for criteria for project sequencing and one to consider in the following steps of the master planning process



# Recommended Criteria (1 of 2)



Criteria	Metric	Weight
Number of Years since Last Improvement	<ul style="list-style-type: none"> <li>The dollars spent per student since 1991, including bond funds, plus State matching funds</li> </ul>	6
Functionality	<ul style="list-style-type: none"> <li>Assessment scores prepared by Darden/iep2</li> </ul>	6
Seismic Needs	<ul style="list-style-type: none"> <li>Structural reports were prepared for the District in 2002 will be used</li> </ul>	5
Age of School	<ul style="list-style-type: none"> <li>Age of the original school building on a site</li> </ul>	5
Physical Condition	<ul style="list-style-type: none"> <li>Assessment scores prepared by Darden/iep2</li> </ul>	5
ADA Compliance	<ul style="list-style-type: none"> <li>Assessment ADA sub-scores prepared by Darden/iep2</li> </ul>	4

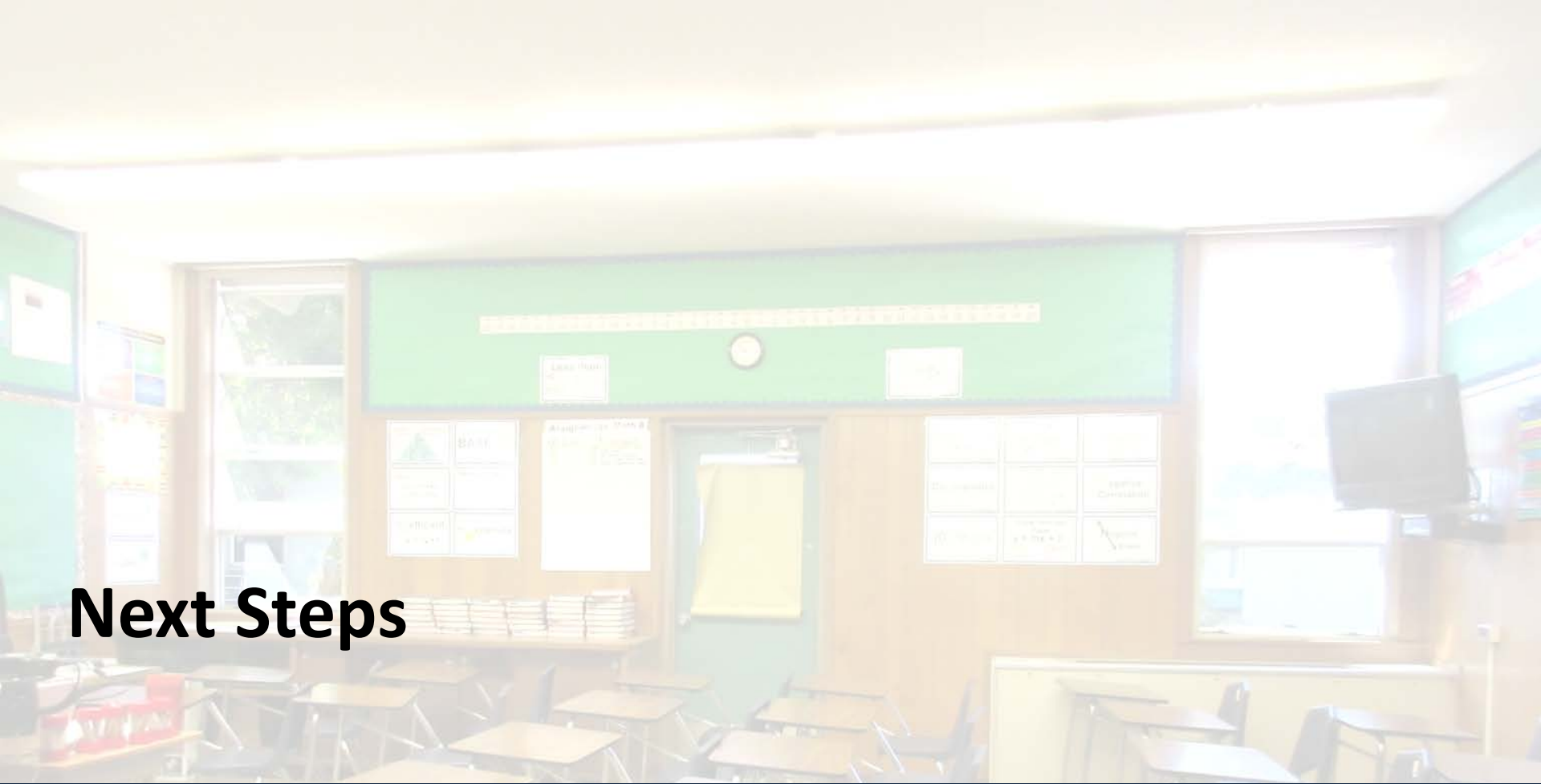


# Recommended Criteria (2 of 2)

Criteria	Metric	Weight
Completed Phases of Design	<ul style="list-style-type: none"> <li>Scale: No Design, MP, SD, DD, CD, DSA</li> </ul>	4
Economically Disadvantaged Area	<ul style="list-style-type: none"> <li>Median Income of the Census Tract</li> </ul>	3
Eligible for State Funding	<ul style="list-style-type: none"> <li>Any state funding</li> </ul>	2
% of Enrollment ESL, Foster, or Low Income	<ul style="list-style-type: none"> <li>LCAP unduplicated count</li> </ul>	2
Lack of Technology Infrastructure	<ul style="list-style-type: none"> <li>IT Grading</li> </ul>	2
Over or Nearing Capacity	<ul style="list-style-type: none"> <li>Utilization using capacity without portables</li> </ul>	1
Cost of Project “Bang for Your Buck”	<ul style="list-style-type: none"> <li>Tabled for program approach options</li> </ul>	







**Next Steps**

**Our Children, Our Schools, Our Future**



# Timeline

## January 2016

- Update on Facilities Condition Scores and Capacity and Utilization Reports
- Meetings with Educational Operations and Facilities for Standards
- Criteria applied to 21 school sites

## February 2016

- Sites Plans, Sequencing and Costs
- Community Meetings Begin

## March 2016

- Draft Facilities Master Plan

## April 2016

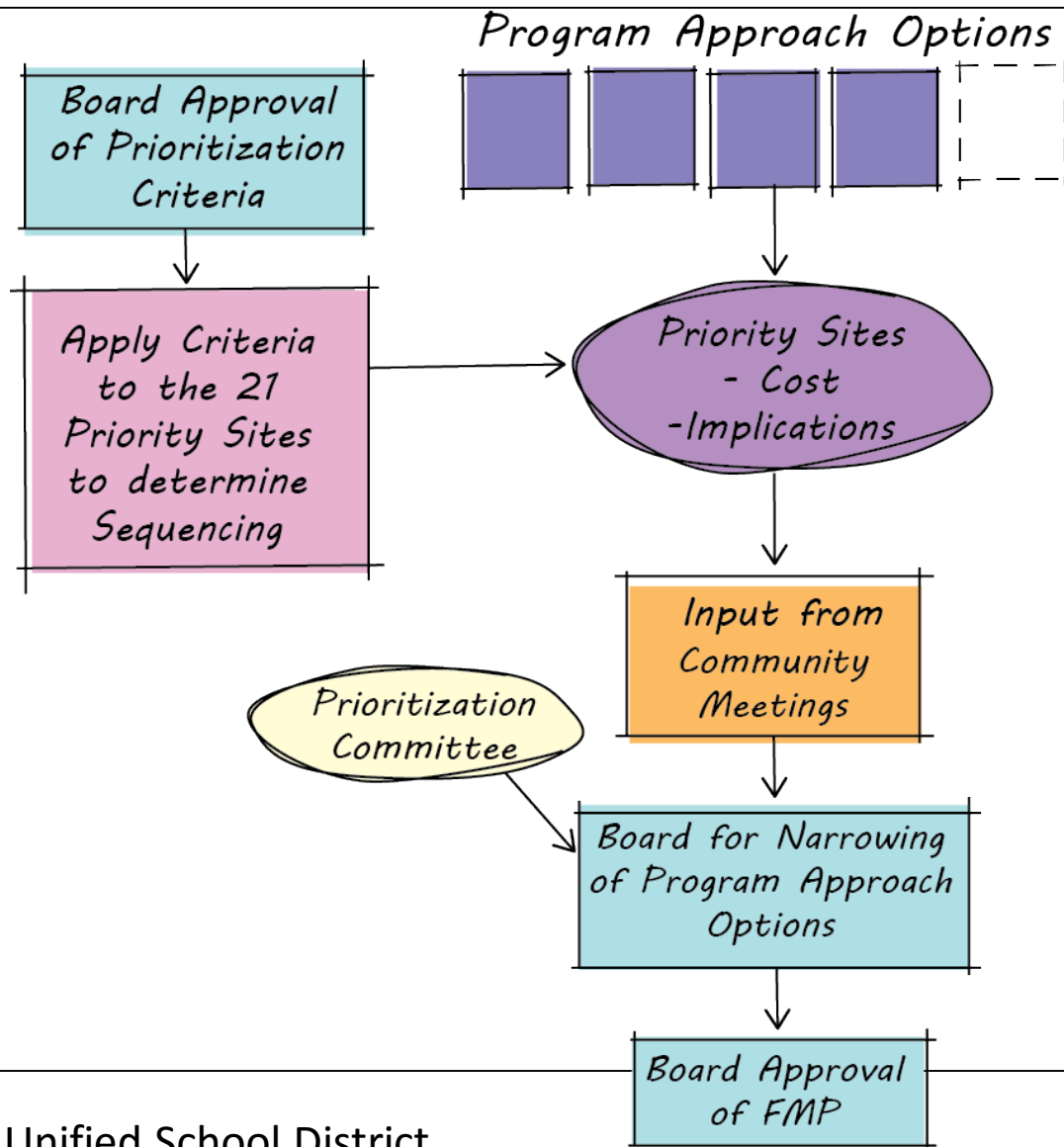
- Final Facilities Master Plan



# Heading Into Program Approach



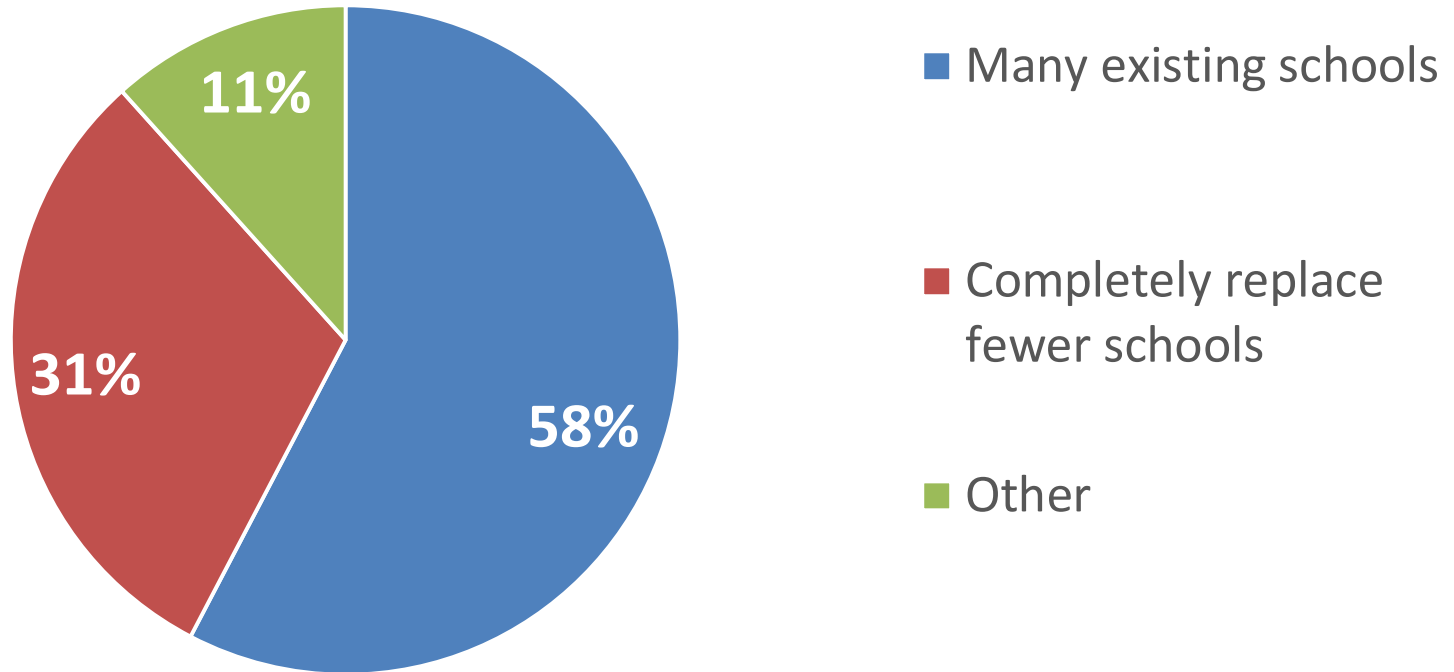
The program approach options are “big picture” scenarios that include the 21 priority schools, the vacant sites, and, in some cases, they may involve other sites within the District. These approach options are based on overall themes from community input, site meetings, City and County meetings and other focus group meetings.



# Preliminary Community Feedback



Would you rather see the remaining District Bond Funds used to make improvements on...



# Potential Program Approach



A	Solve small scale critical issues at select school sites before continuing with all school replacement
B	Embrace modernization through a combination of full modernization and/or replacement
C	Divide Funding Between Each Family and Work with Each Family to Identify The Unique Needs and Priorities for Each of Their Communities
D	Continue with replacement program but with revised standards and adjust capacities
E	Continue with ALL school Replacement Program



# Recommendation



## APPROVE THE PRIORITIZATION CRITERIA AND ASSOCIATED METRICS

Criteria	Metric	Weight
Number of Years since Last Improvement	The dollars spent per student since 1991, including bond funds, plus State matching funds	6
Functionality	Assessment scores prepared by Darden/iep2	6
Seismic Needs	Structural reports were prepared for the District in 2002 will be used	5
Age of School	Age of the original school building on a site	5
Physical Condition	Assessment scores prepared by Darden/iep2	5
ADA Compliance	Assessment ADA sub-scores prepared by Darden/iep2	4

Criteria	Metric	Weight
Completed Phases of Design	Scale: No Design, MP, SD, DD, CD, DSA	4
Economically Disadvantaged Area	Median Income of the Census Tract	3
Eligible for State Funding	Any state funding	2
% of Enrollment ESL, Foster, or Low Income	LCAP unduplicated count	2
Lack of Technology Infrastructure	IT Grading	2
Over or Nearing Capacity	Utilization using capacity without portables	1

